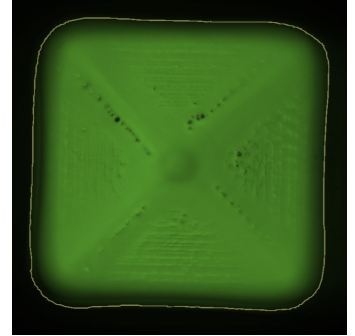


## PAIA QC

### GENERAL PURPOSE

The *PAIA QC* operator is used to detect single fluorescence in a well and determine its area and absolute brightness (not background corrected). It was specifically designed for the PAIA assay, a fast-low-volume assay for IgG-quantification directly from the supernatant after single cell cloning to find the high producer, but can also be used to determine total fluorescence in each well in other applications.



### RESULT TABLE

Cell Area	Detected area per well in mm <sup>2</sup>
Cell Area Count	Number of detected areas
Cell Confluence	Ratio of detected to analysed area per well
Avg Fluorescence Intensity	Average area-weighted fluorescence intensity of the detected fluorescent area per well

### EXAMPLE

The example shows a overview of a 384-well PAIAplate prepared with the PAIA IgG quantification assay, measure and analyzed with the NYONE<sup>®</sup> imager and its YT<sup>®</sup>-software. The lower the intensity of a well, the higher was the IgG concentration in the supernatant. The top two lines show the standard series for the determination of the concentrations in the samples.

